

---

# Semiinclusive hadronic $B$ decays using SCET

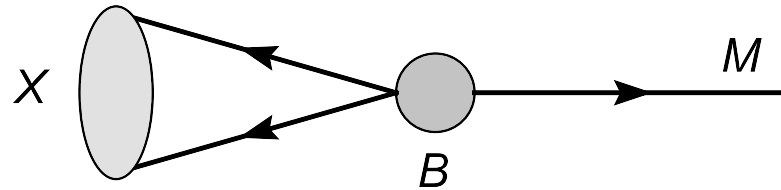
Jure Zupan

University of Ljubljana and Josef Stefan Institute

based on Chay, Leibovich, Kim, JZ, hep-ph/0607004 + unpubl.

# Experimental info

- $B$  decays to  $M$  and an inclusive jet  $X$  back-to-back



- endpoint region  $p_X^2 \sim m_b \Lambda$
- for almost a decade only  $Br(B \rightarrow \eta' X)$  [BaBar 2004](#), [CLEO 2003](#)

$$Br(B \rightarrow \eta' X_s) |_{p_{\eta'} > 2.0 \text{ GeV}} = (420 \pm 94) \cdot 10^{-6}$$

- summer 2006: BaBar first measurements of  $B \rightarrow K X$  (using fully recon.  $B$ ) [BaBar 2006](#)

$$Br(B^+ / B^0 \rightarrow K^+ X) |_{p_K > 2.34 \text{ GeV}} = (196_{-34}^{+37+31}) \cdot 10^{-6}$$

$$Br(B^+ / B^0 \rightarrow K^0 X) |_{p_K > 2.34 \text{ GeV}} = (154_{-48}^{+55+55}) \cdot 10^{-6}$$

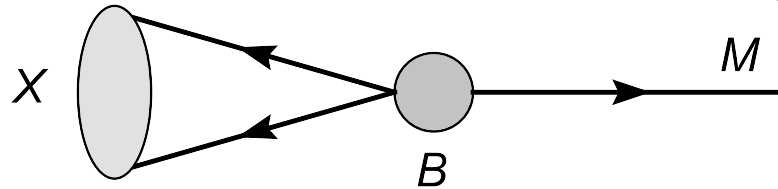
# Outline

---

- decays not involving isosinglets
  - factorization
  - charming penguins
- decays involving  $\eta, \eta'$
- comparison with experiment

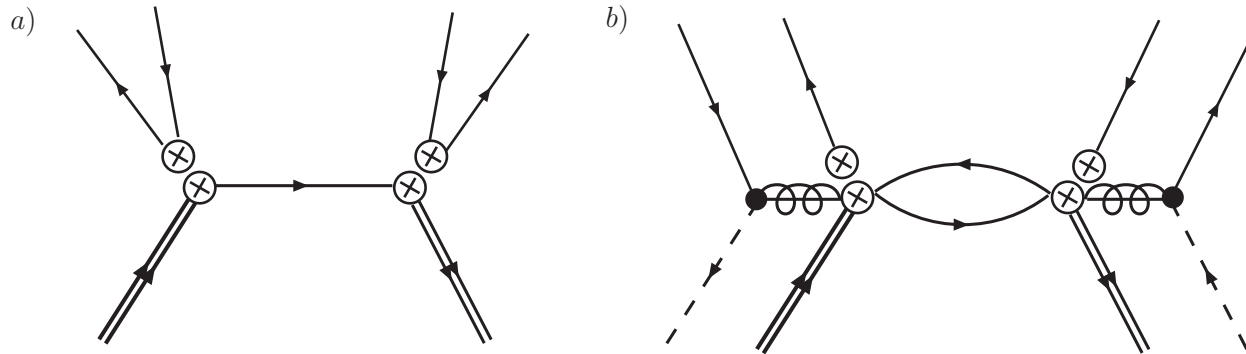
# Motivation

Chay, Leibovich, Kim, JZ, 2006



- in the endpoint region factoriz. as in 2-body  $B$  decays
- these decays simpler than 2-body  $B$  decays
  - no dependence on  $\zeta, \zeta_J$  at LO in  $1/m_b$
  - the same shape and jet function as in  $B \rightarrow X_s \gamma$ , even this cancels in  $A_{CP}$
- can be used as probes of
  - factorization
  - $1/m_b$  expansion
  - nonpert. charming penguins

# No dependence on $\zeta, \zeta_J$ at LO in $1/m_b$



- topologies with spectator going in  $M$  are down  $1/m_b^2$
- LO contribution (in SCET<sub>I</sub>,  $\lambda = \Lambda/m_b$ )

$$\int dx_i T \mathcal{O}_i(x_1) \mathcal{O}_j^\dagger(x_2) \sim \underbrace{(\lambda^3)^2}_{\mathcal{O}_{i,j}} \underbrace{\frac{1}{(\lambda)^2}}_{dx_{1,2}} = \lambda^4$$

- spectator interaction

$$\int dx_i T \mathcal{O}_{1i}(x_1) \mathcal{L}_{sc}(x_3) \mathcal{O}_{1j}^\dagger(x_2) \mathcal{L}_{sc}(x_4) \sim \underbrace{(\lambda^3 \sqrt{\lambda})^2}_{\mathcal{O}_{1i,1j}} \underbrace{\frac{1}{(\lambda)^2}}_{dx_{1,2}} \underbrace{\frac{1}{(\lambda^2)^2}}_{dx_{3,4}} \underbrace{(\lambda^{5/2})^2}_{\mathcal{L}_{sc}} = \lambda^4 \lambda^2$$

# Factorization for nonisosinglets

Chay, Leibovich, Kim, JZ, 2006

- the weak operators have the form

$$\mathcal{O}_i = [\bar{q}'_n \not{n} P_L Y_n^\dagger b_v] [\bar{q}'_{\bar{n}} \not{n} P_{L,R} q''_{\bar{n}}]_u \sim J_C \times J_H$$

- no soft gluon exchanges at LO

$$\langle MX | \mathcal{O}_i | B \rangle \rightarrow \langle M | J_C | 0 \rangle \langle X | J_H | M \rangle$$

- the decay width from

$$\begin{aligned} \mathcal{S}(E_M, \mu_0) &\propto \text{Im} \, i \int d^4 z \, e^{-ip_M \cdot z} \langle B | T J_H^\dagger(z) J_H(0) | B \rangle \\ &\propto \int dl_+ \, f(l_+) \text{Im} J_P(m_b - 2E_M + l_+ + i\epsilon) \end{aligned}$$

- the same  $\mathcal{S}(E_M, \mu_0)$  also in  $B \rightarrow X_s \gamma$

# The decay width

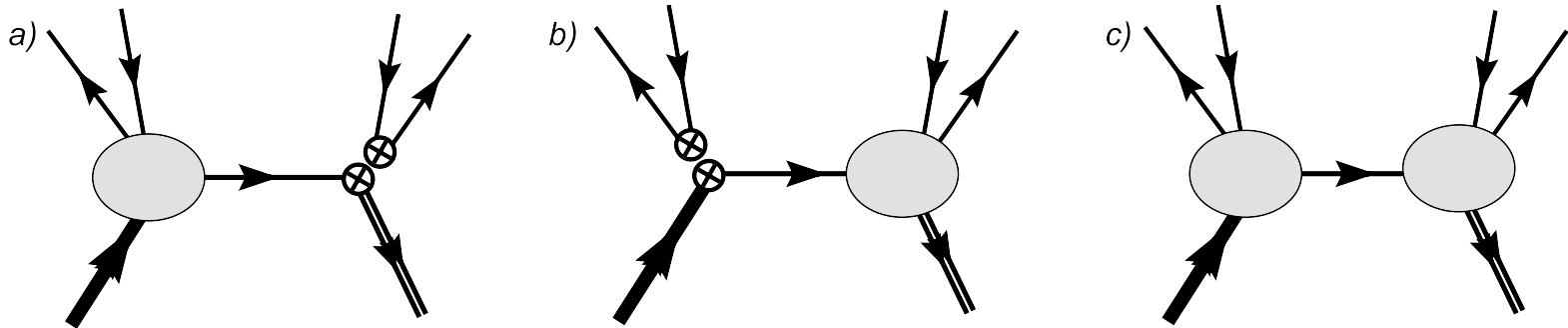
- normalizing to  $B \rightarrow X_s \gamma$

$$\frac{d\Gamma(\bar{B} \rightarrow MX)/dE_M}{d\Gamma(\bar{B} \rightarrow X_s \gamma)/dE_\gamma} \Big|_{E_M=E_\gamma} \propto \frac{|h_M^{(q)}|^2 + 2\text{Re}[c_{cc}\lambda_c^{(q)} f_M \mathcal{P}_{cc}^M (h_M^{(q)})^*] + |c_{cc}\lambda_c^{(q)}|^2 f_M^2 \mathcal{P}_{cc}^M}{|\lambda_t^{(s)} C_\gamma (c_9^{\text{eff}} + 1/2c_{12}^{\text{eff}})|^2}$$

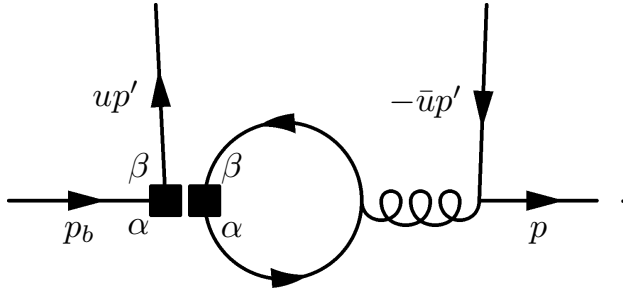
- $h_M^{(q)}$ : the hard kernels convoluted with LCDA

$$h_M^{(q)} = f_M \phi_M(u) \otimes (\lambda_u^{(q)} T_{M,u}^{(q)}(u) + \lambda_c^{(q)} T_{M,c}^{(q)}(u))$$

- $p_{cc}^M, \mathcal{P}_{cc}^M$ : nonpert. charming penguin parameters



# Factor. for charming penguins



- work in the limit  $m_b, m_c \rightarrow \infty$ ,  $m_c/m_b$  fixed

- charm quark pair annihilation:

$$\mathcal{O}_{c\bar{c}n\bar{n}} \sim (\bar{q}_n \gamma^\mu T^a q_n) (\bar{c}_{-v_{\bar{c}c}} Y_n^\dagger \gamma_\mu T^a Y_n^\dagger c_{v_{\bar{c}c}})$$

- weak operator

$$\mathcal{O}_{qbcc\bar{c}} \sim [(\bar{q}_n)_\beta \gamma^\nu P_L (Y_n^\dagger b_\nu)_\alpha] [(\bar{c}_{v_{\bar{c}c}} Y_n^\dagger)_\alpha \gamma_\nu P_L (Y_n^\dagger c_{-v_{\bar{c}c}})_\beta]$$

- using factorization of  $\bar{n}$  and  $n$  degrees of freedom

$$\langle MX | T \mathcal{O}_{c\bar{c}n\bar{n}} \mathcal{O}_{qbcc\bar{c}} | B \rangle \rightarrow \langle X | \mathcal{Q}_{c\bar{c}} | B \rangle \times \phi_M(u) H(u, E_M) \Big|_{\bar{u} = \frac{2m_c^2}{m_b E_M}}$$

- $\mathcal{Q}_{c\bar{c}}$  nonlocal oper. of  $q_n$  and soft fields



# Contribution to the decay width

- using optical theorem from

$$\text{Im}\langle B | T J_H^\dagger(z) Q_{c\bar{c}}(0) | B \rangle \rightarrow \mathcal{F}_{c\bar{c}}$$

- single charming penguin insert. at LO in  $1/m_c$  gives

$$\frac{d\Gamma_{c\bar{c}}(B \rightarrow MX)}{dE_M} \propto \alpha_s(2m_c) f_M \phi_M \left(1 - \frac{2m_c^2}{m_b E_M}\right) \times \\ \times \text{Re} \left[ h_M^{(q)*}(m_b) \lambda_c^{(q)} \mathcal{F}_{c\bar{c}}(E_M) \right]$$

- integrating out  $q_n \Rightarrow J_P$ , further factorization

$$\mathcal{F}_{c\bar{c}} \propto f_{c\bar{c}}(l_+) \otimes_{l_+} \text{Im} J_P(l_+ + i\epsilon)$$

# Charming penguin parameters

- at LO in  $1/m_c$ ,  $\alpha_s(2m_c)$

$$p_{cc}^M \propto \mathcal{F}_{cc} \phi_M \left(1 - \frac{2m_c^2}{E_M m_b}\right), \quad \mathcal{P}_{cc}^M \propto \bar{\mathcal{F}}_{cc} \left[ \phi_M \left(1 - \frac{2m_c^2}{E_M m_b}\right) \right]^2$$

- parameters  $\mathcal{F}_{cc}$  and  $\bar{\mathcal{F}}_{cc}$  are universal
- dependence on  $M$  fixed through  $\phi_M$
- $\mathcal{F}_{cc}$  can carry strong phase
- nonperturb. charming penguins for all  $B \rightarrow XM$  described by 3 real parameters
  - in the limit  $m_c \rightarrow \infty$
  - $E_M$  dependence neglected (subleading effect)
- in principle can also treat  $p_{cc}^M$ ,  $\mathcal{P}_{cc}^M$  as free params.

# $B \rightarrow \eta' X, \eta X$ decays

- $\eta - \eta'$  mixing  $\Rightarrow$  FKS scheme

$$\eta = \eta_q \cos \varphi - \eta_s \sin \varphi, \quad \eta' = \eta_q \sin \varphi + \eta_s \cos \varphi$$

with  $\varphi = (39.3 \pm 1.0)^\circ$

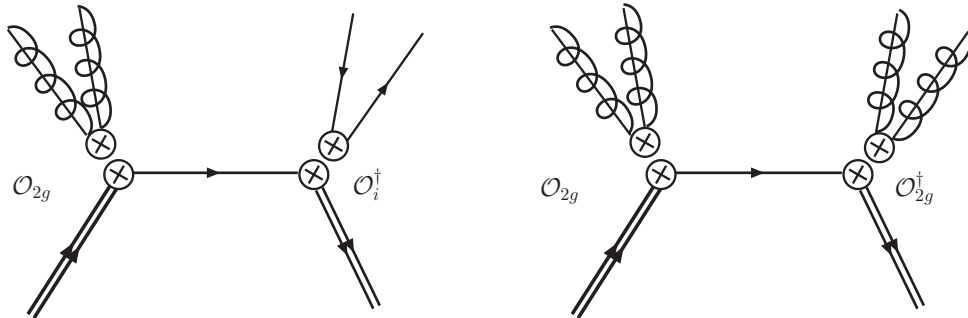
- gluonic content of  $\eta^{(\prime)}$

- two new operators at LO

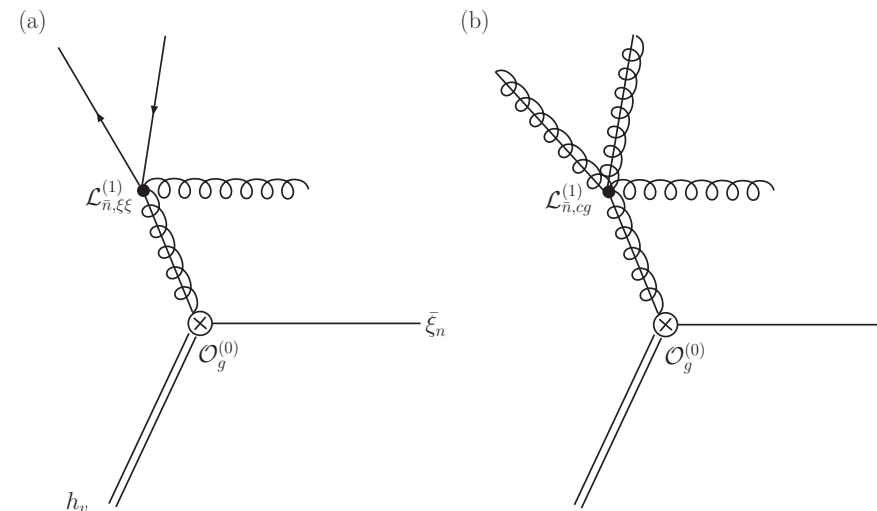
$$\mathcal{O}_{1g} = m_b [\bar{q}_n Y_n^\dagger Y_{\bar{n}} \bar{\eta} P_L \mathcal{B}_{\bar{n}}^\perp Y_{\bar{n}}^\dagger b_v],$$

$$\mathcal{O}_{2g} = m_b [\bar{q}_n \bar{\eta} P_L Y_n^\dagger b_v] \text{Tr}[\mathcal{B}_{\bar{n}}^{\perp\mu} \mathcal{B}_{\bar{n}}^{\perp\nu}] u i \epsilon_{\perp\mu\nu},$$

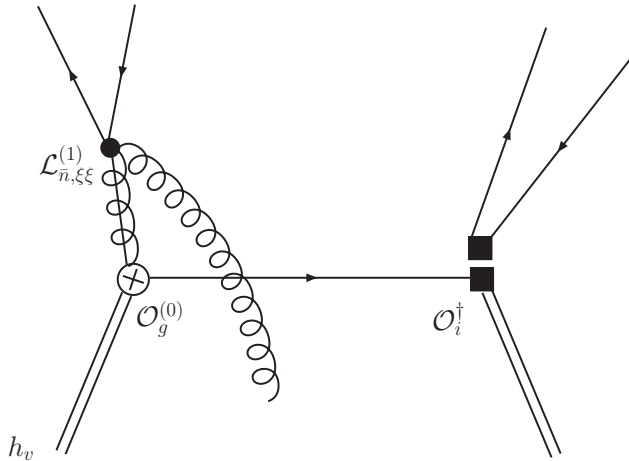
- $\mathcal{O}_{2g}$  insertions  $\Rightarrow \phi_M \rightarrow \bar{\Phi}_M^g$



- $\mathcal{O}_{1g}$  insertions



# $\mathcal{O}_{1g}$ insertion



- focusing only on this  $T$  product

$$\mathcal{G}_{\xi\xi} = \langle MX|i \int d^4x T \{ \mathcal{O}_{1g}, \mathcal{L}_{\xi\xi}^{(1)}(x) \} |B\rangle$$

- integrating out hard-collinear gluon  $\Rightarrow$  new jet function  $J_1$

- in general  $J_1$  depends on  $u$  and  $k_-$  so

$$\mathcal{G}_{\xi\xi} = -\frac{g^2}{2} \int du f_M \phi_M(u) \int \frac{dk_- dx_+}{4\pi} e^{-ik_- x_+/2} \left( \frac{1}{u} J_1(u, k_-) - \frac{1}{\bar{u}} J_1(\bar{u}, -k_-)^* \right) \\ \langle X | [\bar{q}_n Y_n^\dagger Y_{\bar{n}}(0) \not{n} g \mathcal{A}_{us}^\perp(x_+) P_R Y_{\bar{n}}^\dagger b_v(0) | B \rangle$$

$$\text{with } g \mathcal{A}_{us}^{\perp, \mu} = [Y_{\bar{n}}^\dagger i D_{us}^{\perp \mu} Y_{\bar{n}}]$$

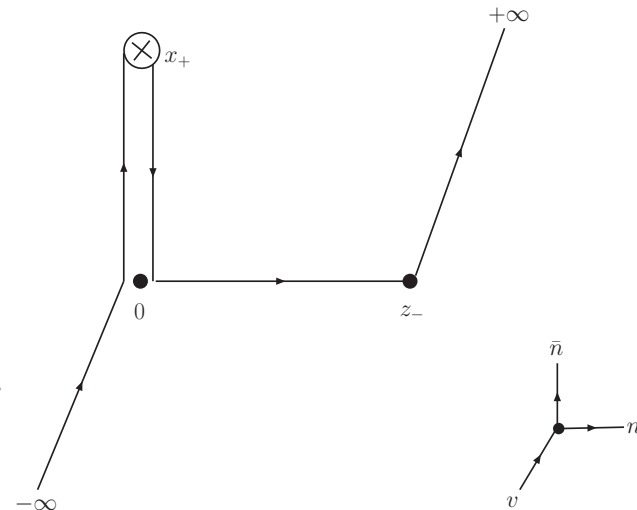
- at tree level  $J_1(u, k_-)$  only function of  $k_- \Rightarrow$  integrations over  $u$  and  $k_-$  factor

# $\mathcal{O}_{1g}$ insertion II

- working at tree level
- a new shape function

$$\int dl_+ e^{il_+ z_- / 2} \int dr_- e^{ir_- x_+ / 2} f_g(l_+, r_-) =$$

$$\langle \bar{B}_v | \bar{b}_v Y_n(z_-) Y_n^\dagger Y_{\bar{n}}(0) \vec{n} g \mathcal{A}_{us}^\perp(x_+) P_R Y_{\bar{n}}^\dagger b_v(0) | B_v \rangle$$



- from it a new  $\tilde{\mathcal{S}}$  func.

$$\tilde{\mathcal{S}}_g(E_M, \mu_0) \propto \int dl_+ dr_- \text{Im} [J_P(l_+ + m_b - 2E_M + i\epsilon) f_g(l_+, r_-) J_1(r_-) |_{\text{tree}}]$$

- decay width at LO in  $\alpha_s(\sqrt{\Lambda m_b})$

$$\left( \frac{d\Gamma}{dE_M} \right)_g \propto \tilde{\mathcal{S}}_g(E_M, \mu_0) 2\mathcal{R}e \left[ (f_M \phi_M \otimes \lambda_p^{(q)} T_{M,p}^{(q)})^* (\lambda_t^{(q)} \mathcal{C}_{1g} \frac{g^2}{2} f_M \phi_M \otimes \left( \frac{1}{u} + \frac{1}{\bar{u}} \right)) \right]$$

- similarly for two  $\mathcal{O}_{1g}$  insertions

# Comparison with data

- at present not enough data to determine nonpert. charming peng. parameters
- comparing purely pert. predictions with experiment

$$\frac{\Gamma(B^+/B^0 \rightarrow K^+ X)}{\Gamma(B \rightarrow X_s \gamma)} = \begin{cases} 1.13 \pm 0.30 \pm ? & \text{Exp.} \\ 0.17 \pm 0.09 \pm 0.06 & \text{Th.} \end{cases}$$

$$\frac{\Gamma(B^+/B^0 \rightarrow K^0 X)}{\Gamma(B \rightarrow X_s \gamma)} = \begin{cases} 0.89 \pm 0.42 \pm ? & \text{Exp.} \\ 0.20 \pm 0.11 \pm 0.06 & \text{Th.} \end{cases}$$

- hint of nonpert. charm. peng. or large  $1/m_b$ ?

# Comparison with data II

---

- other way of presenting
  - extract  $p_{cc}^K$  with assumption  $|p_{cc}^K|^2 \sim \mathcal{P}_{cc}^K$
  - this still depends on phase of  $p_{cc}^K$
  - vary this phase

$$\left| \frac{\lambda_c^{(s)} f_K p_{cc}^K}{h_K^{(s)}} \right| = \begin{cases} 2.2 \pm 1.1 & : K^+ X \\ 2.0 \pm 1.5 & : K^0 X. \end{cases}$$

# Phenomenology of $B \rightarrow \eta' X_s$

- perturb. prediction without  $\mathcal{O}_{1g}$  much smaller than exp.
- two formal limits are instructive
  - dominating charming penguins

$$\frac{Br(B^- \rightarrow \eta X_{s\bar{u}}^-)}{Br(B^- \rightarrow \eta' X_{s\bar{u}}^-)} = (\tan \phi)^2 = 0.67$$

contrary to  $B \rightarrow \eta^{(\prime)} K$  no large hierarchy in this limit

- $\mathcal{O}_{2g}$  contributions dominate then at LO in  $\alpha_s(\sqrt{\Lambda m_b})$

$$\frac{Br(B^- \rightarrow \eta X_{s\bar{u}}^-)}{Br(B^- \rightarrow \eta' X_{s\bar{u}}^-)} = \frac{\left| (\cos \phi f_{\eta_q} \phi_{\eta_q} - \sin \phi f_{\eta_s} \phi_{\eta_s}) \otimes \left( \frac{1}{u} + \frac{1}{\bar{u}} \right) \right|^2}{\left| (\cos \phi f_{\eta_q} \phi_{\eta_q} + \sin \phi f_{\eta_s} \phi_{\eta_s}) \otimes \left( \frac{1}{u} + \frac{1}{\bar{u}} \right) \right|^2}$$

depending on LCDA this  $\sim 10^{-4} - \sim 10^{-2}$

- important to have a measurement of  $B \rightarrow \eta X_s$  decays



# Conclusions

---

- LO analysis of all  $B \rightarrow XM$  modes has been presented
- a disagreement between measured  $B \rightarrow KX$  rates and the LO perturbative predictions?